



28 Park Street, Mumbles, Swansea, City & County Of Swansea, SA3 4DA

Offers Over £275,000

This charming two double-bedroom terraced property is nestled in the heart of the ever-popular village of Mumbles and is being offered with no onward chain. Full of character, the home sits on a 0.04-acre plot with a floor area of 1077 sq. ft.

The ground floor accommodation includes a welcoming porch, a spacious lounge, and a well-appointed kitchen. Upstairs, the first floor features two generous double bedrooms and a family bathroom.

To the rear, the outdoor space is designed for relaxation and entertaining, with a raised patio seating area that accommodates outdoor furniture. There is also a detached garden shed and steps leading to a second raised patio area, offering further seating options.

This delightful property is perfect for those looking to enjoy the vibrant lifestyle of Mumbles in a home that blends character with modern comfort.

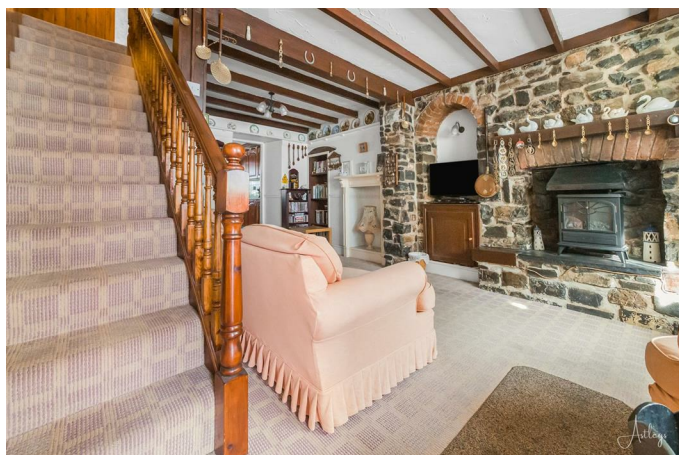
Entrance

Via a frosted double glazed PVC door into the porch.

Porch

With a hardwood door into the lounge. Tiled floor.

Lounge 21'10" x 13'10" (6.673 x 4.223)



With a set of double glazed windows to the front. Stairs to the first floor. Two radiators. Door to the kitchen. Feature stained glass window to the kitchen.

Lounge



Lounge



Kitchen 16'1" x 13'2" (4.906 x 4.020)



With a set of double glazed windows to the rear. Double glazed PVC door to the rear. The kitchen is fitted with a range of base and wall units, running work surface incorporating a one and a half bowl stainless steel sink and drainer unit. Space for cooker. Plumbing for washing machine. Space for fridge/freezer. Tiled floor.

Kitchen



Kitchen



Kitchen



First Floor

Landing



With a door to the airing cupboard. Door to the bathroom. Doors to bedrooms. Radiator.

Bathroom 11'9" x 6'8" (3.599 x 2.040)



Suite comprising; Large walk in shower. W/C. Bidet. Wash hand basin. Radiator. Part tiled walls.

Bathroom



Bedroom One



Bedroom One 13'1" x 15'8" (4.000 x 4.781)



With a set of double glazed windows to the rear. Radiator. Wash hand basin. Doors to built in wardrobes.

Bedroom Two 9'5" x 12'8" (2.886 x 3.886)



With a set of double glazed windows to the front. Radiator.

Bedroom Two



External

Aerial Aspect



Aerial Aspect



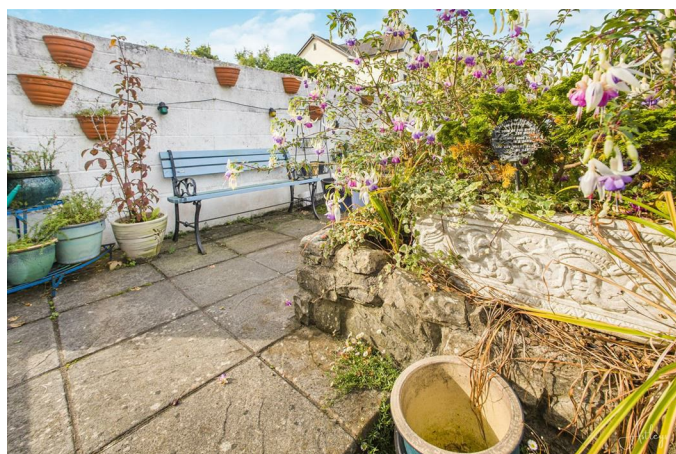
Aerial Aspect



Rear

You have a raised patio seating area with room for tables and chairs. Detached garden shed. Steps leading up to a further raised patio seating area.

Rear Garden



Rear Garden



Council Tax Band

Council Tax Band -

Services

Mains electric. Mains sewerage. Mains water. Mains Gas. Broadband type - ultrafast fibre. Mobile phone coverage available with EE, Three, O2 & Vodafone.

Tenure

Freehold.

Rear Garden



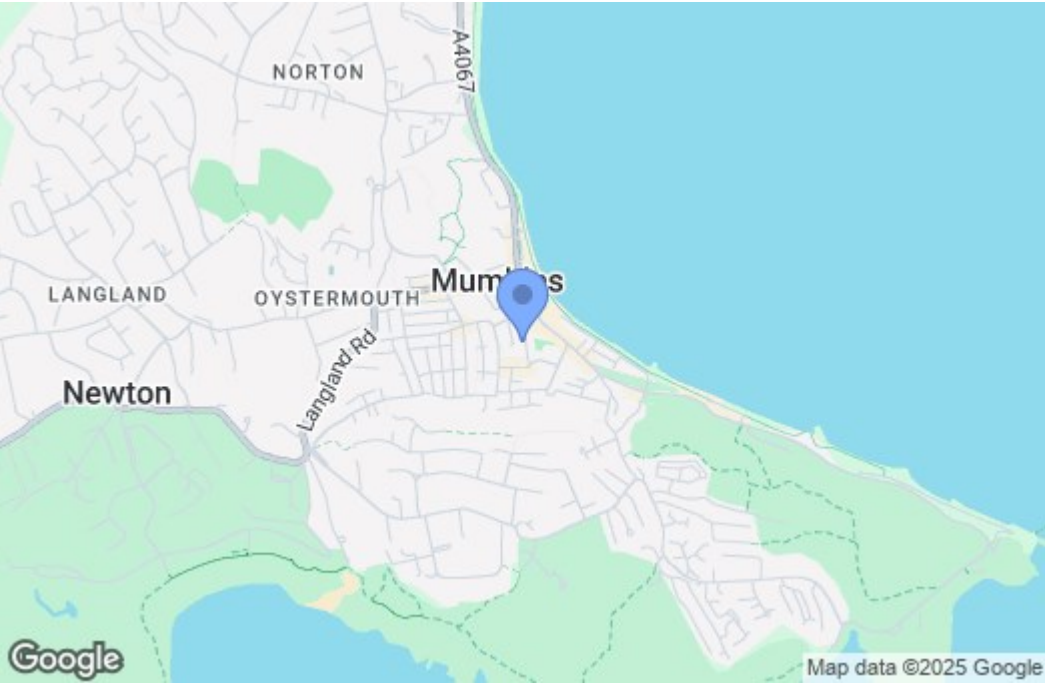
Rear Garden



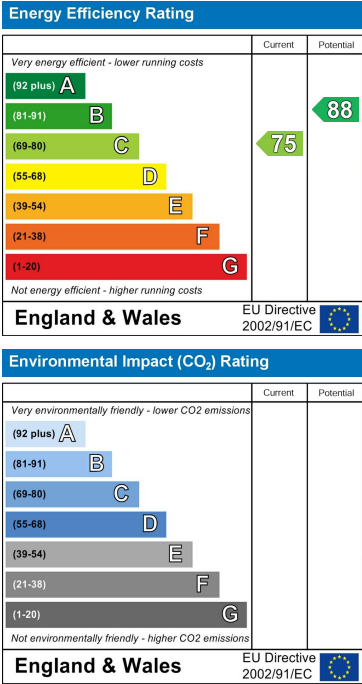
Floor Plan



Area Map



Energy Efficiency Graph



These particulars, whilst believed to be accurate are set out as a general outline only for guidance and do not constitute any part of an offer or contract. Intending purchasers should not rely on them as statements of representation of fact, but must satisfy themselves by inspection or otherwise as to their accuracy. No person in this firms employment has the authority to make or give any representation or warranty in respect of the property.